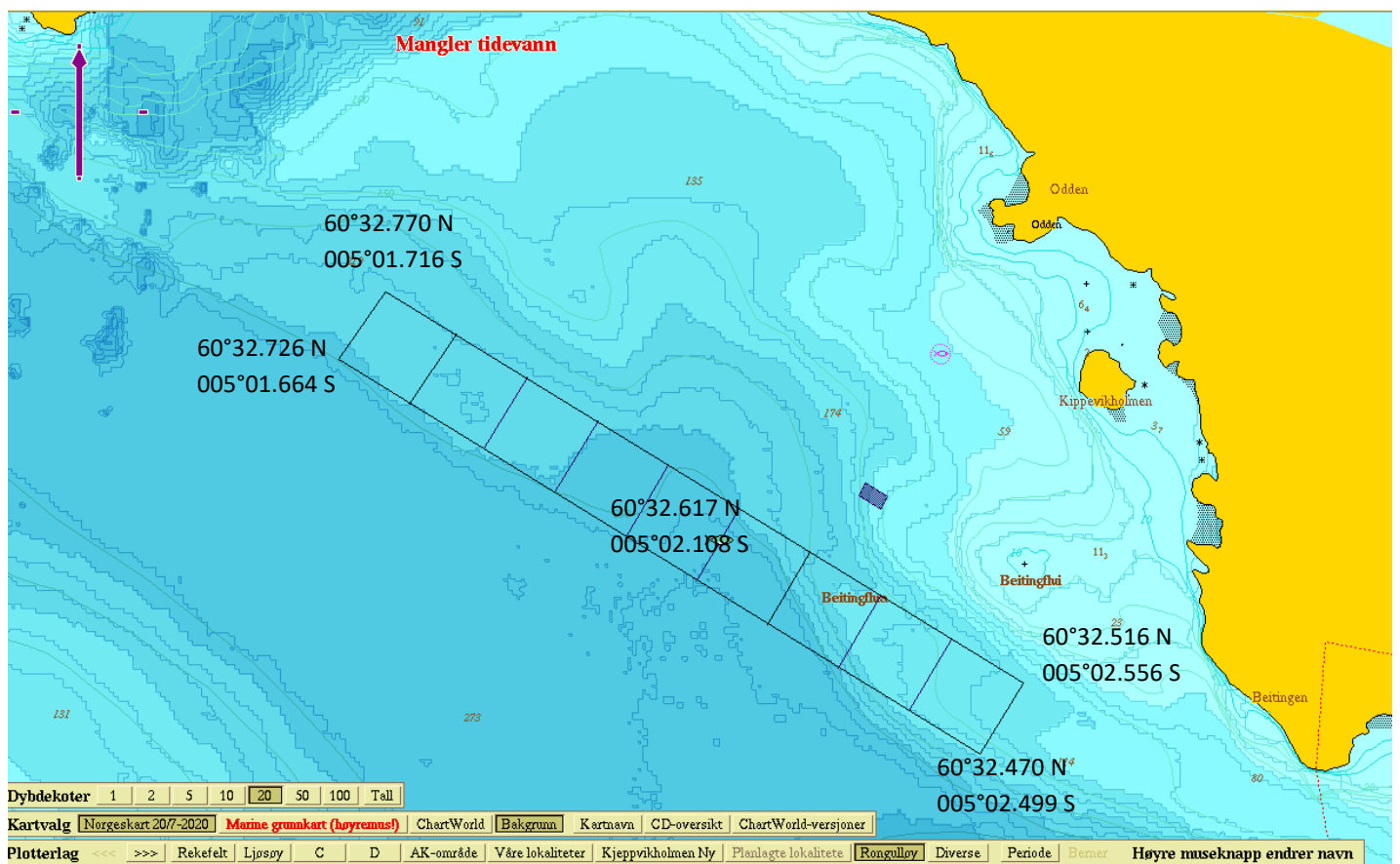


# Posisjoner



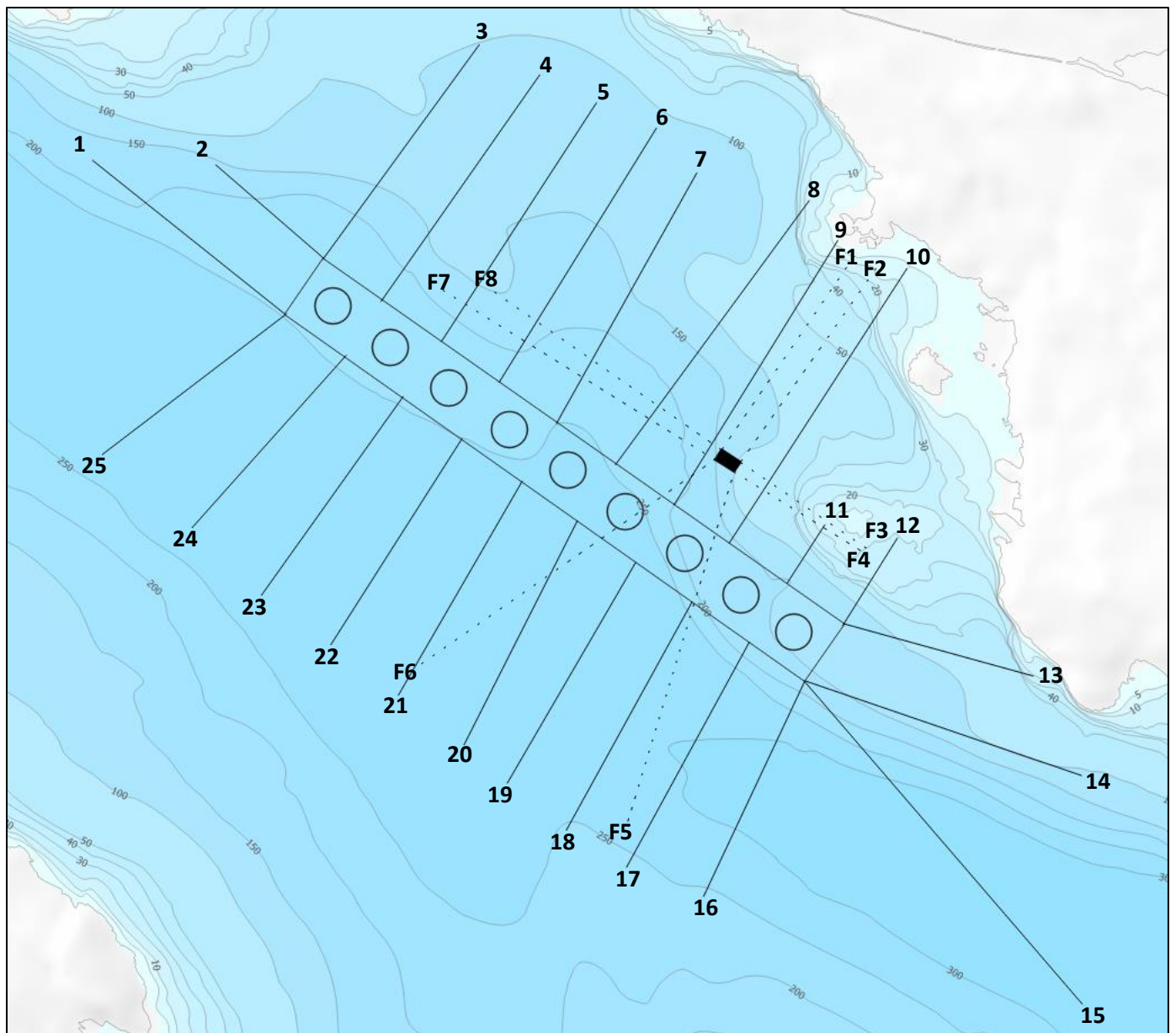
## Rammestørrelse

9 stk. 100mx100m

## Ramme

Nord vest:	60°32.726 N	005°01.664 Ø
Nord øst:	60°32.770 N	005°01.716 Ø
Sør øst:	60°32.516 N	005°02.556 Ø
Sør vest:	60°32.470 N	005°02.499 Ø
Midtpunkt:	60°32.617 N	005°02.108 Ø

# Ankerposisjoner



**Ramme**

1	60°32.824 N	005°01.365 Ø	T
2	60°32.828 N	005°01.551 Ø	T
3	60°32.926 N	005°01.935 Ø	↙
4	60°32.909 N	005°02.028 Ø	↙
5	60°32.891 N	005°02.119 Ø	↙
6	60°32.876 N	005°02.210 Ø	↙
7	60°32.842 N	005°02.276 Ø	↙
8	60°32.834 N	005°02.461 Ø	T
9	60°32.798 N	005°02.500 Ø	T
10	60°32.780 N	005°02.611 Ø	T
11	60°32.583 N	005°02.511 Ø	T
12	60°32.583 N	005°02.632 Ø	T
13	60°32.484 N	005°02.865 Ø	T
14	60°32.408 N	005°02.954 Ø	T
15	60°32.227 N	005°02.993 Ø	↙
16	60°32.298 N	005°02.360 Ø	↙
17	60°32.316 N	005°02.238 Ø	↙
18	60°32.342 N	005°02.143 Ø	↙
19	60°32.375 N	005°02.046 Ø	↙
20	60°32.400 N	005°01.975 Ø	↙
21	60°32.435 N	005°01.867 Ø	↙
22	60°32.472 N	005°01.760 Ø	↙
23	60°32.509 N	005°01.632 Ø	↙
24	60°32.555 N	005°01.517 Ø	↙
25	60°32.608 N	005°01.375 Ø	↙

**Flåte**

F1	60°32.793 N	005°02.532 Ø	T
F2	60°32.788 N	005°02.570 Ø	T
F3	60°32.582 N	005°32.582 Ø	T
F4	60°32.576 N	005°02.557 Ø	T
F5	60°32.346 N	005°02.223 Ø	↙
F6	60°32.457 N	005°01.869 Ø	↙
F7	60°32.752 N	005°01.905 Ø	↙
F8	60°32.750 N	005°01.982 Ø	↙